

# Highgate Wood Sports Field Redevelopment

## Presentation to CREOS

Patrick Cozier – Highgate Wood (Headteacher)

Ian Heptonstall –North London Cricket Club (Vice Chair)

Andy Newton – Highgate Cricket Club (Treasurer)

Thursday 2<sup>nd</sup> May 2024



## Agenda

- School Context – Why we are keen to develop the Sports Field
- The relationship with North London and Highgate Cricket Clubs
- The Plans – Some Visuals
- Commitment to Consulting with Relevant Stakeholders
- Questions

## School Context

- We have over 1600 students at HWS – this has grown over the last few years
- For four years running we have taken on additional students in each year group to support Haringey with increased demand for places (i.e. 270 students in a year group vs 243 students)
- Our 6<sup>th</sup> form has grown from 200 students a few years ago to 300 currently
- We now use our Sports Hall for Exams – this takes out a sports facility for the mock exams in the winter and the public exams each summer
- We have split lunches – students use the tennis courts as a recreational space – for two hours a day PE has no availability

## School Context

- We have over 1600 students at HWS – this has grown over the last few years
- For four years running we have taken on additional students in each year group to support Haringey with increased demand for places (i.e. 270 students in a year group vs 243 students)
- Our 6<sup>th</sup> form has grown from 200 students a few years ago to 300 currently
- We now use our Sports Hall for Exams – this takes out a sports facility for the mock exams in the winter and the public exams each summer
- We have split lunches – students use the tennis courts as a recreational space – for two hours a day PE has no availability

**The Sports Field has become more important**

## Why the link with North London and Highgate

- Approached by North London and Highgate a few years ago – pre Covid
- HWS not that keen – Didn't feel the need
- Current pressures on space and no money to spend led us to approaching North London and Highgate to revisit the proposed partnership

## Why the link with North London and Highgate

- Approached by North London and Highgate a few years ago – pre Covid
- HWS not that keen – Didn't feel the need
- Current pressures on space and no money to spend led us to approaching North London and Highgate to revisit the proposed partnership

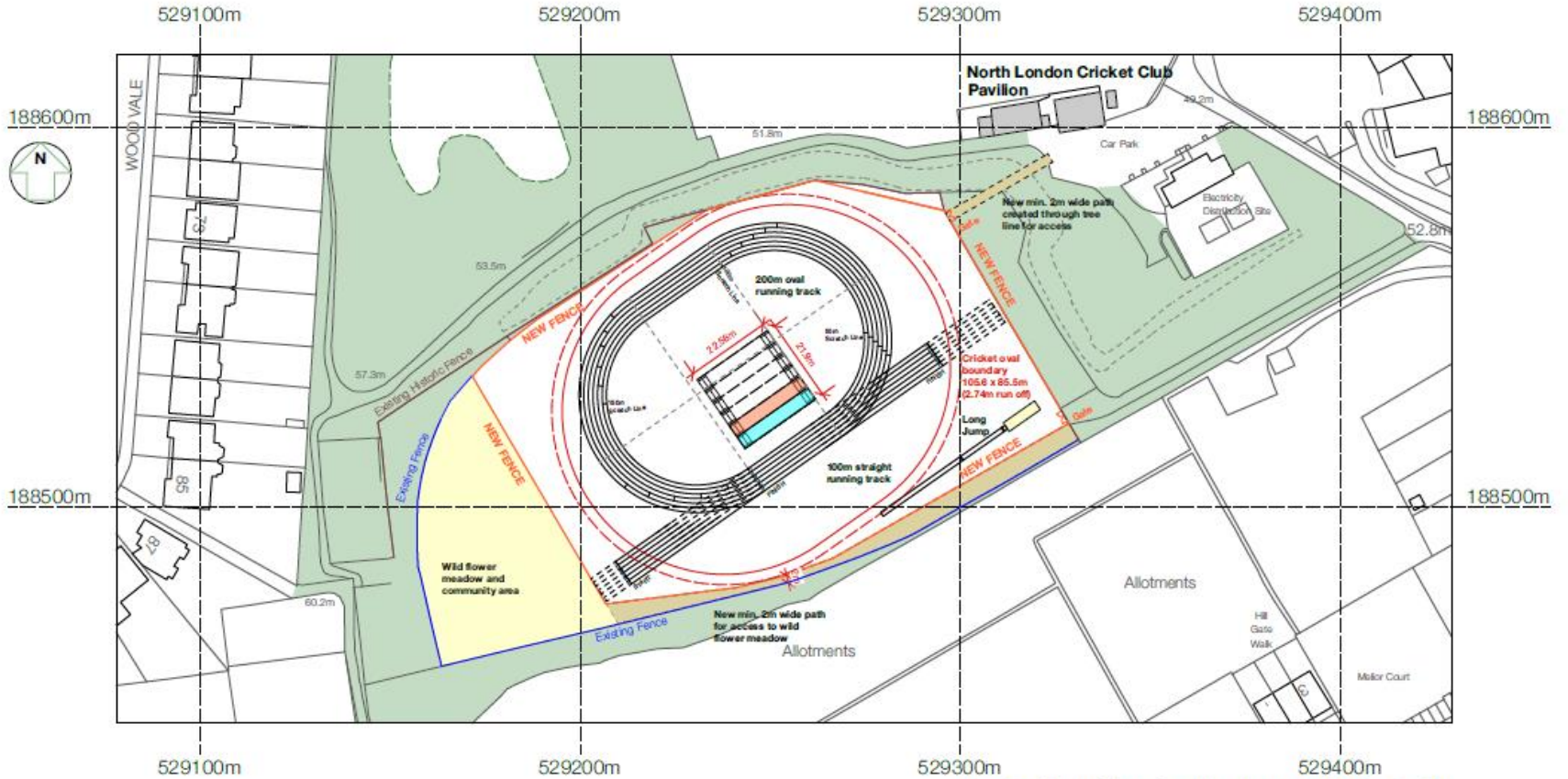
**We understand fully that this has to be of mutual benefit to both the school and the cricket clubs**

# The Plans

## Required Works

1. The clearing of shrubs and undergrowth from the perimeter.
2. Crown lifting some trees and cutting back some of the overgrown shrubs and bushes on the site.
3. Installation of a suitable drainage and watering system.
4. Resurfacing the entire area.
5. Creating at least 5 turf cricket pitches and one non-turf pitch for use by HCLTC, NLCC and HWS during their allocated times. As grass wickets have a limited number of uses during the season close liaison on the use of the wickets would be required between the 3 parties and the grounds staff.
6. Creating, for the School's use, two 9-a-side football pitches with goals on wheels, marking out a 200m athletics track, and throwing area, a long jump run up and pit and a secure container to house equipment.
7. Erection of perimeter fencing for security and safeguarding purposes, while still permitting pedestrians to walk around that perimeter on the eastern, southern and western sides of the playing fields.
8. Erection of boundary netting where appropriate to ensure the safe use of the space.
9. Pedestrian access will be created from the NLCC car park.
10. Provision of gated vehicle access (equipment, emergency vehicle etc) via the current access road.
11. A small shelter for players and scorers is, subject to planning, desirable.
12. A secure container for storage of any machinery and equipment. A review of any further equipment requirements (e.g. light roller) will be needed.

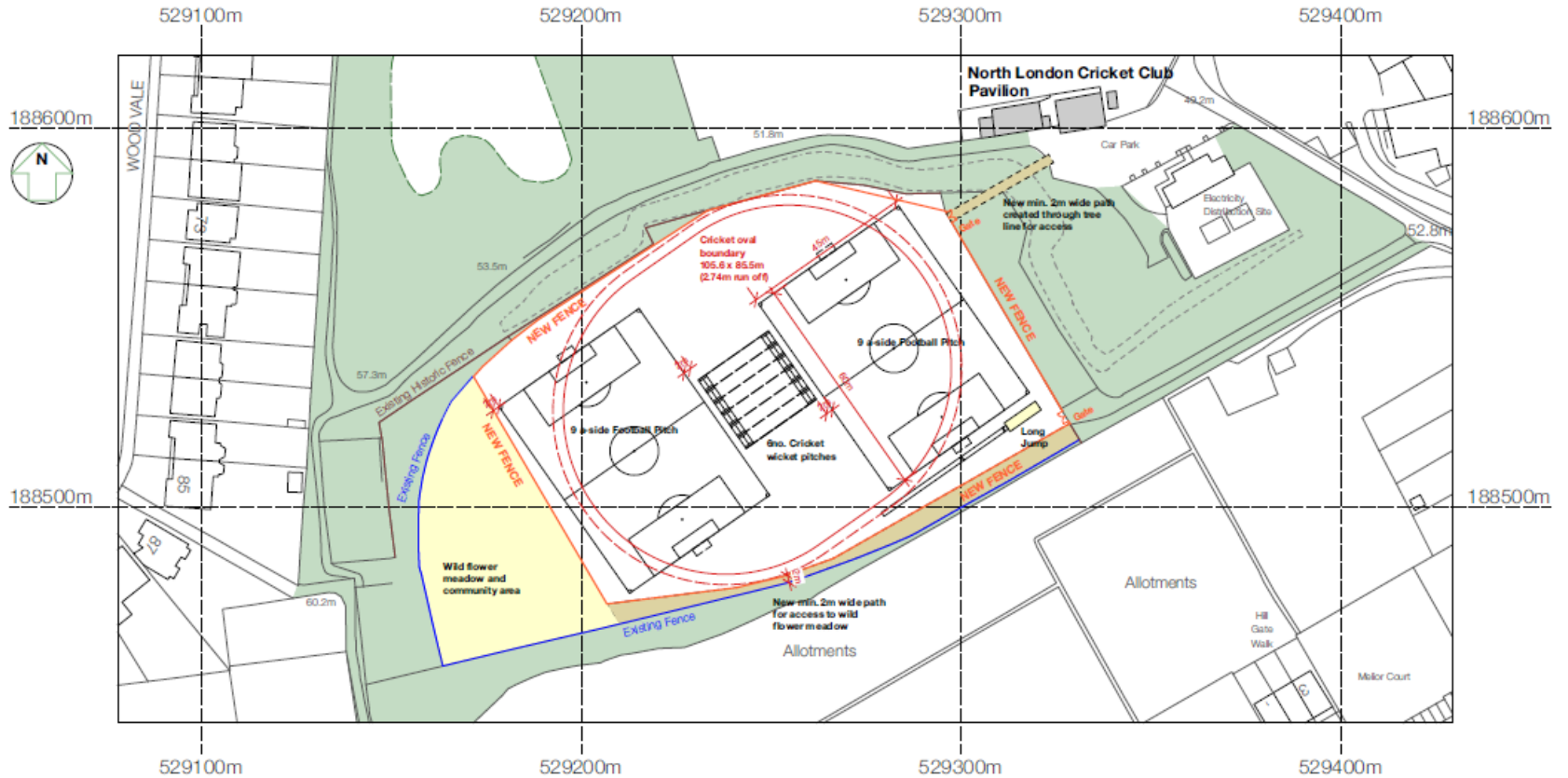




Reproduced from the Ordnance Survey Map with permission of the Controller of the Stationery Office Crown Copyright reserved Licence No. 100007094

**PROPOSED : Summer : CRICKET PITCH + 200m RUNNING TRACK**

Scale 1:1250



Reproduced from the Ordnance Survey Map with permission of the Controller of the Stationery Office Crown Copyright reserved Licence No. 100007094

**PROPOSED : Winter : CRICKET PITCH + FOOTBALL PITCHES**  
 Scale 1:1250

## Next Steps

- Early stages of the process – many bridges still to cross
- Keen to engage with and consult all relevant local stakeholders – open to finding positive solutions for all